

EZBOXPRO, LLC TEST REPORT

SCOPE OF WORK

NON-STANDARD R&D DURABILITY TESTING OF EZBOXPRO™

REPORT NUMBER

103934071MID-002AR0

TEST DATE(S)

06/06/19 - 06/07/19

ISSUE DATE

06/27/19

PAGES

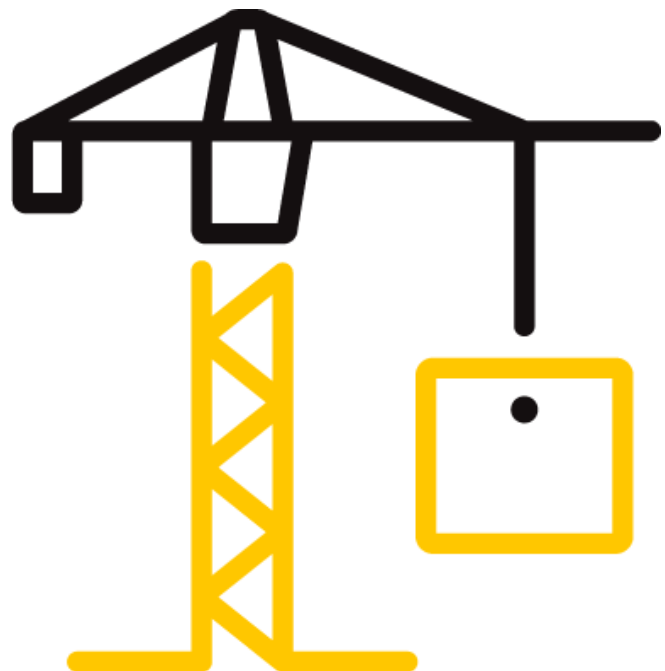
7

DOCUMENT CONTROL NUMBER

ATI 00231 (09/05/17)

RT-R-AMER-Test-2827

© 2017 INTERTEK



TEST REPORT FOR EZBOXPRO, LLC

Report No.: 103934071MID-002AR0

Date: 06/27/19

REPORT ISSUED TO

EZBOXPRO, LLC

1072 West 128th Street

Grant, MI 49327

SECTION 1

SCOPE

Intertek Building & Construction (B&C) was contracted by EZBOXPRO, LLC to evaluate ezBoxPro™ for durability in accordance with Intertek Test Plan 103934071MID-001R0. Results obtained are tested values and were secured by using the designated test method(s). Testing was conducted at the Intertek B&C test facility in Middleton, Wisconsin.

This report does not constitute certification of this product nor an opinion or endorsement by this laboratory. Although an attempt was made to replicate the conditions of intended use, actual results may vary.

SECTION 2

SUMMARY OF TEST RESULTS

GYPSON PANEL TYPE	INITIAL FORCE TO PENETRATE	NUMBER OF USES
1/2" Lightweight	67 lbf	>64
5/8" Type X Fire Code	113 lbf	7
1/2" Mold-Resistant	80 lbf	11
5/8" inch Abuse-Resistant	193 lbf	1
1/2" Fiberglass Mat	91 lbf	14

For INTERTEK B&C:

COMPLETED BY: Andrew Holstein, Ph.D.

Senior Project Engineer

TITLE:

Evaluation Services

SIGNATURE:

DATE: 06/27/19

REVIEWED BY: Craig H. Wagner, P.E.

Chief Engineer

TITLE:

Certification

SIGNATURE:

DATE: 06/27/19

This report is for the exclusive use of Intertek's Client and is provided pursuant to the agreement between Intertek and its Client. Intertek's responsibility and liability are limited to the terms and conditions of the agreement. Intertek assumes no liability to any party, other than to the Client in accordance with the agreement, for any loss, expense or damage occasioned by the use of this report. Only the Client is authorized to permit copying or distribution of this report and then only in its entirety. Any use of the Intertek name or one of its marks for the sale or advertisement of the tested material, product or service must first be approved in writing by Intertek. The observations and test results in this report are relevant only to the sample(s) tested. This report by itself does not imply that the material, product, or service is or has ever been under an Intertek certification program.

TEST REPORT FOR EZBOXPRO, LLC

Report No.: 103934071MID-002AR0

Date: 06/27/19

SECTION 3

TEST METHODS

The specimens were evaluated in accordance with Intertek Test Plan 103934071MID-001R0. This test plan was mutually agreed upon by Intertek B&C and EZBOXPRO, LLC.

SECTION 4

MATERIAL SOURCE

The materials for testing were provided directly by the client and were not independently selected by Intertek personnel. The material was tested as received.

SECTION 5

LIST OF OFFICIAL OBSERVERS

NAME	COMPANY
Ed Weldon	Intertek B&C
Andrew Holstein	Intertek B&C

SECTION 6

TEST PROCEDURES

All test conditions were at standard laboratory conditions unless otherwise reported. Refer to the test related photos in Section 9.

To mimic an end use condition with an electrical box installed 16 inches above the finished floor height and drywall panels installed horizontally with their top edge positioned 48 inches above the finished floor, five different gypsum panels were penetrated by a sample of the ezBoxPro™ tool following a 32-inch-radius arc. Load was applied to the sample and the 32-inch-radius arc was maintained by the test fixture pictured in Section 9 of this report. The gypsum panel was repositioned prior to each use such that no two penetrations were within six inches of another. A force gauge (ICN: 65162) was used to determine the force required to penetrate a fresh sample through each gypsum panel. Samples that were useable after the eighth penetration had the force to penetrate measured again during the ninth use and every eighth use thereafter. Testing continued with the same sample until visible damage occurred to the ezBoxPro™ tip.

TEST REPORT FOR EZBOXPRO, LLC

Report No.: 103934071MID-002AR0

Date: 06/27/19

SECTION 7

TEST RESULTS

GYPSUM PANEL TYPE	FORCE TO PENETRATE		USES	OBSERVATIONS
	INITIAL	SUBSEQUENT		
1/2" Lightweight	67 lbf	66 lbf after 8 uses 63 lbf after 16 uses 64 lbf after 24 uses 70 lbf after 32 uses 59 lbf after 40 uses 70 lbf after 48 uses 67 lbf after 56 uses	>64	No damage
5/8" Type X Fire Code	113 lbf	N/A	7	Tip bent on 7 th use
1/2" Mold-Resistant	80 lbf	97 lbf after 8 uses	11	Tip bent on 11 th use
5/8" inch Abuse-Resistant	193 lbf	N/A	1	Tip bent on 1 st use
1/2" Fiberglass Mat	91 lbf	80 lbf after 8 uses	14	Tip bent on 14 th use

SECTION 8

CONCLUSION

When evaluated in accordance with Intertek Test Plan 103934071MID-001R0, the product exhibited the properties tabulated in Section 7. Although an attempt was made to replicate the conditions of intended use, actual results may vary.

TEST REPORT FOR EZBOXPRO, LLC

Report No.: 103934071MID-002AR0

Date: 06/27/19

SECTION 9 PHOTOGRAPHS



Photo No. 1
Typical ezBoxPro™ Sample (in junction box)

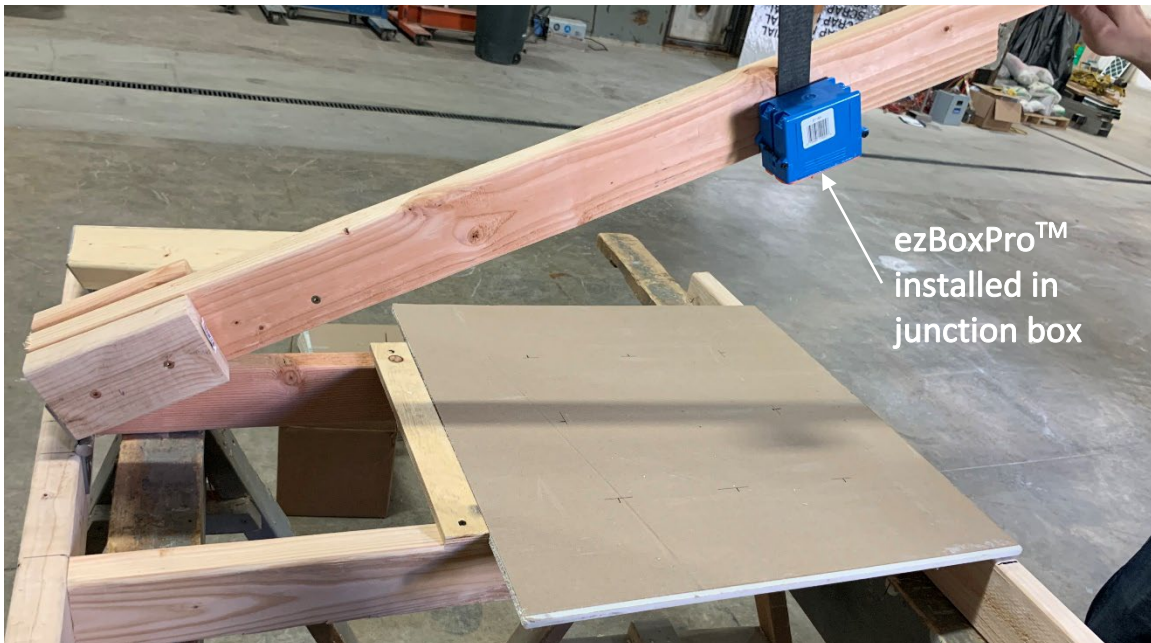


Photo No. 2
Typical Test Arrangement

TEST REPORT FOR EZBOXPRO, LLC

Report No.: 103934071MID-002AR0

Date: 06/27/19

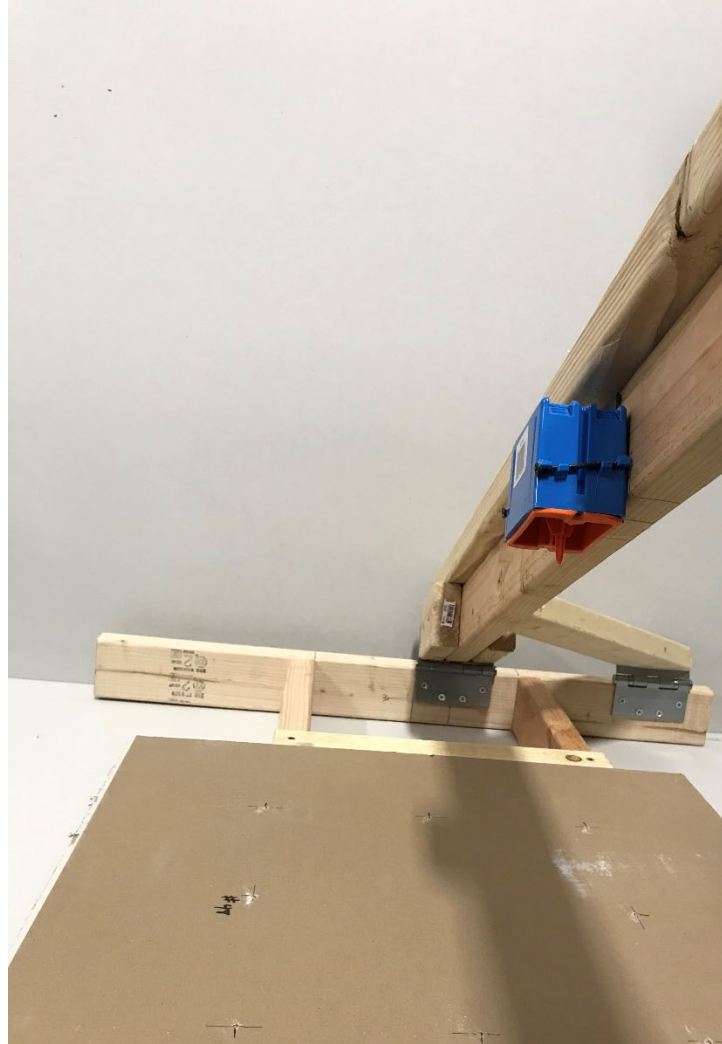


Photo No. 3
Typical Test Arrangement



Total Quality. Assured.

8431 Murphy Drive
Middleton, Wisconsin 53562

Telephone: 608-836-4400
Facsimile: 608-831-9279
www.intertek.com/building

TEST REPORT FOR EZBOXPRO, LLC

Report No.: 103934071MID-002AR0

Date: 06/27/19

SECTION 10

REVISION LOG

REVISION #	DATE	PAGES	REVISION
0	06/27/19	N/A	Original Report Issue