

ezBoxPRO™



Installation and Limited Warranty

CAREFULLY READ ALL INSTRUCTIONS AND GUIDELINES PRIOR TO USE.

The ezBoxPRO™'s Safe And Intended Use is to mark the location of an electrical box when installing ½" Regular or 5/8" Firecode drywall and to help protect electrical boxes and wires from damage.

WARNING. Do Not Use The ezBoxPRO™ Except In Accordance With These Instructions and Guidelines:

The ezBoxPRO™ is designed to be inserted into an electrical box before drywall is installed. Drywall or the ezBoxPRO™ can be damaged if not used in Accordance with these instructions and guidelines. Failure to do so may result in serious harm or injury.

Place one ezBoxPRO™ in each electrical box in order to mark the electrical box's location when installing ½" Regular or 5/8" Firecode drywall.

Re-use of the ezBoxPRO™ is strictly limited to the following conditions: PRIOR TO RE-USE, ALWAYS INSPECT ALL PARTS OF THE DEVICE FOR VISIBLE SIGNS OF WEAR, DAMAGE OR MISSING PARTS. DISCARD AND DO NOT REUSE ANY ezBoxPRO™ WITH SIGNS OF WEAR, DAMAGE OR MISSING PARTS. Failure to follow these instructions may result in serious harm or injury.

Contact Information

ezBoxPRO™, LLC
1072 W. 128th Street
Grant, Michigan 49327

ezorders@ezBoxPRO™.com
ezsupport@ezBoxPRO™.com

Safety Warning

Do not step on ezBoxPRO™, or leave ezBoxPRO™ on floor unattended. Failure to follow instructions may result in serious harm or injury.

Step 1

Insert the ezBoxPRO™ into the outlet, switch or ceiling fixture electrical box with the point outward (after the wires have been pulled into the box and pushed to the back). Insert one end completely into the electrical box and then push the rest of the ezBoxPRO™ into the box. See (a) and (b) below for additional tips for use with a multi gang box or a round box.



Step 2

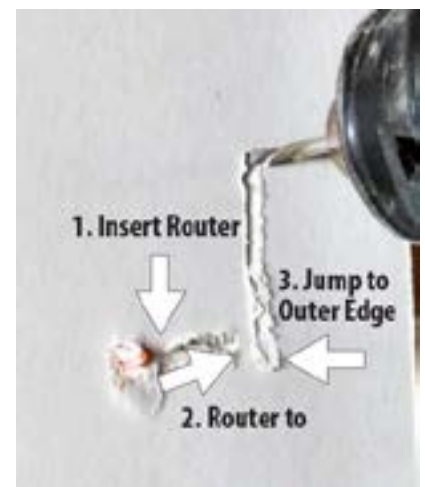
Keep the drywall away from the ezBoxPRO™ point until the sheet is in place and ready to mark the box. Secure the top edge of the drywall and then press the sheet firmly over the ezBoxPRO™ point.

WARNING: MOVING THE POSITION OF THE DRYWALL AFTER IT CONNECTS WITH THE ezBoxPRO™ POINT MAY CAUSE THE POINT TO BEND OR BREAK. WHEN PRESSING DRYWALL SHEET INTO PLACE KEEP HANDS AWAY FROM AREA OF ezBoxPRO™ POINT. FAILURE TO FOLLOW THESE INSTRUCTIONS MAY RESULT IN SERIOUS HARM OR INJURY.



Step 3

Insert a drywall cut out bit (no more than one (1) inch depth) next to the ezBoxPRO™ point, maneuver it to the inside edge of the ezBoxPRO™ and then jump the bit over to the outside edge of the electrical box. Follow the contour of the electrical box for a clean drywall cut out (c). Then remove the drywall cut out piece and complete the installation of the drywall sheet.



Step 4

Remove the ezBoxPRO™ prior to installation of the electrical plug, switch or light fixture.



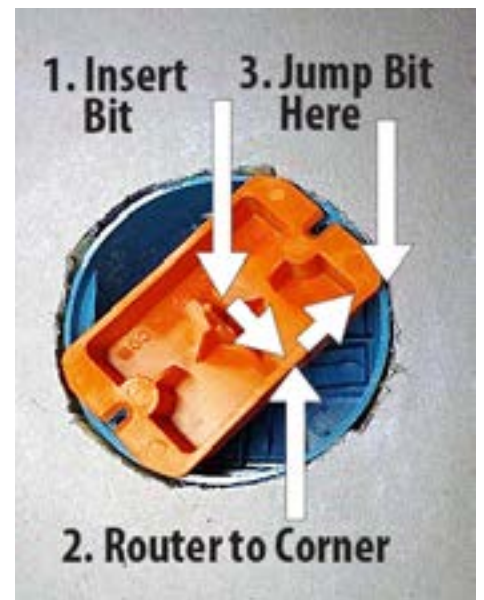
(a) Multi-Gang Box Instructions

If the electrical box is a multi-gang box, insert the ezBoxPRO™ into the box right next to the stud that the box is attached to (this will keep the highest tension for the ezBoxPRO™ point to penetrate the drywall). Insert the router bit next to the ezBoxPRO™ point, maneuver the bit **to the side attached to the stud** and then jump towards the stud to the outside edge of the electrical box (this will help keep the router bit away from any area of the electrical box that is not covered by the ezBoxPRO™). Follow the contour of the electrical box for a clean drywall cut out and then remove the drywall cut out piece (c).



(b) Round Box Instructions

If it is a round electrical box, insert the router bit next to the ezBoxPRO™ point, slide the bit to the inside edge of the ezBoxPRO™, maneuver the bit to a corner of the ezBoxPRO™ **and then** jump the bit over to the outside edge of the electrical box. Follow the contour of the electrical box for a clean drywall cut out and then remove the drywall cut out piece. **Whenever in doubt about the type of electrical box behind the ezBoxPRO™ point, use the method of maneuvering to the corner of the ezBoxPRO™ before jumping the drywall cut out bit from inside the ezBoxPRO™ to the outside of the electrical box – this will help keep the router bit away from any area of an electrical box not covered by the ezBoxPRO™.**



(c) Always follow the drywall cut out tool manufacturer's instructions when using the drywall cut out tool.

Notes

The ezBoxPRO™ is currently designed to fit in the blue PVC single gang, multi-gang and round electrical boxes with a single product. If there is a loose fit (more common in the multi-gang boxes), there is a slot that allows the ezBoxPRO™ to be secured with a screw.

Prior to use, always inspect the ezBoxPRO™ to verify the point is straight and intact and that there are no defects.

WARNING: DO NOT STEP ON ezBoxPRO™, OR LEAVE ezBoxPRO™ ON FLOOR UNATTENDED. FAILURE TO FOLLOW THESE INSTRUCTIONS MAY RESULT IN SERIOUS HARM OR INJURY.

Limited Warranty

ezBoxPRO™, LLC (the “Company”) expressly warrants to the original purchaser that if, within one (1) year after the original purchase of the ezBoxPRO™ (the “product”), the product should be proven defective in material or workmanship if installed and used in accordance with the instructions, such defect(s) will be repaired by the Company or the product will be replaced by the Company with new or reconditioned product (at the Company’s option). The extent of the Company’s liability under this warranty is limited to the repair or replacement provided above, and, in no event, shall the Company’s liability exceed the original purchase price paid to the Company for the product. This warranty applies only to the use of the product as intended by the Company and is void if there is any misapplication, improper installation, neglect, alteration, misuse or abuse of this product, abnormal use, acts of god, fire or flood, or improper repair, or damage in shipping. This warranty shall run only to the original purchaser of the product from the Company or from the Company’s distributor, and is non-assignable and non-transferable and shall be of no force and effect if asserted by any person other than the original purchaser. This warranty is in lieu of all other express or implied warranties or liabilities. EXCEPT AS SPECIFIED IN THIS WARRANTY, ALL EXPRESS OR IMPLIED CONDITIONS, REPRESENTATIONS AND WARRANTIES, INCLUDING, WITHOUT LIMITATION, ANY IMPLIED WARRANTY OR CONDITION OF MERCHANTABILITY, FITNESS FOR A PARTICULAR PURPOSE, NON-INFRINGEMENT, SATISFACTORY QUALITY, NON-INTERFERENCE, ACCURACY OF INFORMATIONAL CONTENT, OR ARISING FROM A COURSE OF DEALING, COURSE OF PERFORMANCE, LAW, USAGE, OR TRADE PRACTICE, ARE HEREBY EXCLUDED TO THE EXTENT ALLOWED BY APPLICABLE LAW AND ARE EXPRESSLY DISCLAIMED BY THE COMPANY. TO THE EXTENT AN IMPLIED WARRANTY CANNOT BE EXCLUDED, SUCH WARRANTY IS LIMITED IN DURATION TO THE EXPRESS WARRANTY PERIOD. This disclaimer and exclusion shall apply even if the express warranty set forth above fails of its essential purpose. Any action for breach of this warranty must be filed within a period of 90 days after the date any claim for such breach first accrues. Under no circumstances will the Company be liable for any consequential, incidental or punitive damages, including any damages related to lost profits, loss of business or loss of goodwill. Some states do not allow limitations on how long an implied warranty lasts or do not allow the exclusion or limitation of incidental or consequential damages, so the above limitations or exclusion may not apply to you. This warranty gives you specific legal rights and you may also have other rights which vary from state to state. **THE EzBoxPRO™ INSTALLATION GUIDELINES AND INSTRUCTIONS MUST BE FOLLOWED CAREFULLY AND COMPLETELY.** Choice of law. All disputes regarding warranty claims shall be adjudicated in the federal or state courts of the State of Michigan, which shall have exclusive jurisdiction over any dispute.

Additional information available at:

<https://ezBoxPRO.com>

Customer Service:

E-mail: ezsupport@ezBoxPRO.com

ezBoxPRO™, LLC all rights reserved.

U.S. PATENT No. 6,403,883

Made in the U.S.A

ezBoxPRO™